

CoolFire Pebble 英文说明书

尺寸：56*96mm

封面材质：157g 双铜板纸单面过哑胶



内页材质：128g 双铜纸双面印刷

装订方式：胶装



COOLFIRE Pebble

USER MANUAL

COOLFIRE Pebble

COMPLETE VAPING SYSTEM

Congratulations on your purchase of this Innokin CoolFire Pebble Advanced Personal Vaporizer. For the best possible vaping experience, please read carefully, and follow this user manual.

The CoolFire Pebble is the newest in the line of internationally bestselling Innokin CoolFire vaporizers. Ultra compact design and features a greater range of Variable Wattage, advanced safety protections and 'Vape while charging' Technology.

The CoolFire Pebble has an upgraded 1300mAh battery capacity and is more powerful with a variable wattage range of 6.0 – 50.0 Watts, adjustable in .5 watt increments.

The CoolFire Pebble has a flush 510 connection with a spring loaded gold-plated positive pin and durable stainless steel threading. Operated via three durable buttons and has a large high quality bright OLED screen the CoolFire Pebble is easy to use, stylish and powerful.

Please check and verify that your CoolFire Pebble is an authentic Innokin Technology product.

To verify this CoolFire Pebble is a real Innokin Technology device please:

- 1) Locate the label on the packaging and scratch the silver to reveal your CoolFire Pebble Unique Authorization number.
- 2) Visit: <http://www.innokin.com/verify-device/>
- 3) Enter the Unique Authentication number in the Authentication field.
- 4) Verify your CoolFire Pebble is a genuine Innokin Vaporizer.

If you have any questions or suggestions, please write to us at support@innokin.com.

Join our social media channels for the latest Innokin information and great giveaways!

Innokin Facebook Page: <https://www.facebook.com/Innokin.Technology>

Innokin Instagram: <https://www.instagram.com/innokintechnology>

Innokin Subreddit: <https://www.reddit.com/r/innokin>

WARRANTY INFORMATION:

Innokin Technology provides a 90 day after sales service warranty to all authorized vendors. Please consult the official Innokin website (www.innokin.com) or your Authorized Innokin Technology Vendor for more information and terms of service.

The proof of purchase is needed for the 90 Day Limited Warranty.

For more information and to download the warranty card please visit:



<http://www.innokin.com/innokin-90-day-limited-warranty-program/>


SAFETY GUIDELINES AND WARNING:

Please read this section carefully to ensure you receive maximum benefits from your CoolFire Pebble and enjoy vaping with it in the most safe and effective ways possible.

1. This Advanced Personal Vaporizer may be used with e-liquids that contain nicotine. If questions or concerns regarding your e-liquid arise, please check with your e-liquid provider. This product is only intended for use by adults of legal smoking age (18+) and should not be used by children, women who are pregnant or breastfeeding, or persons with or at risk of heart disease, high blood pressure, diabetes or taking medicine for depression or asthma, or who otherwise may be sensitive to nicotine. Nicotine is addictive and habit forming, and can be toxic by inhalation, in contact with the skin or eyes, or if swallowed. Ingestion of the non-vaporized concentrated e-liquid ingredients can be poisonous. Keep away from children and pets.
2. This Advanced Personal Vaporizer may be used with e-liquids that contain nicotine, a chemical known to the State of California to cause birth defects or other reproductive harm.

3. This Advanced Personal Vaporizer is only designed to be used with high quality e-liquid. Please check with your e-liquid provider. This device is not intended for use with loose tobacco leaf or herbal substances.
4. This Advanced Personal Vaporizer has not been evaluated by the Food and Drug Administration and is not intended to treat, mitigate, prevent or cure any disease or condition. This product is not intended for use as a smoking cessation device.
5. The atomizer / tank must be stored out of the reach of children and pets. All empty atomizers must also be disposed of properly and out the reach of children and pets.
6. This Advanced Personal Vaporizer includes small parts such as the mouth piece. Always keep any small parts out of reach of children and pets to prevent swallowing or other harm.
7. Do not misuse, mishandle or store your CoolFire Pebble Advanced Personal Vaporizer improperly. Even though it is made of high quality stainless steel it may become damaged when dropped or otherwise mishandled.

- 
- 
8. Do not attempt to repair the unit by yourself as damage or personal injury may occur.
 9. In order to guarantee the normal functioning of your CoolFire Pebble Advanced Personal Vaporizer, and maximize your vaping pleasure, do not allow the battery power level to drop below 2 bars. When the battery power level drops to 1 bar the device should be charged immediately to maintain the lifespan of your CoolFire Pebble. Innokin is not responsible for battery damage caused by allowing the device to discharge completely.
 10. In order to prolong the operation of your CoolFire Pebble Advanced Personal Vaporizer, please do not place or store this CoolFire Pebble Advanced Personal Vaporizer in excessively hot or cold environments.
 11. Obey local laws or regulations regarding Electronic Cigarettes when vaping. If you are in an area where there are any bans or potential dangers, please do not use your CoolFire Pebble Advanced Personal Vaporizer.
 12. Your Cool Fire Pebble Advanced Personal Vaporizer is not waterproof. Keep it dry at all times.

13. Do not allow any liquids or ejuice to enter the device through the top threading or the USB ports. If any liquids enter the device, or come into contact with the PCB, please discontinue using or charging the device and contact your local Authorized Innokin Vendor immediately.
 14. Keep your CoolFire Pebble Advanced Personal Vaporizer away from sources of excessive heat as damages may occur.
 15. Do not drop, throw, or mishandle your CoolFire Pebble Advanced Personal Vaporizer as the outer shell or inner components may become damaged.
 16. Innokin is not responsible for any atomizer or battery damage due to the use of low quality eLiquid, dry herb, or other materials for which the CoolFire Pebble Advanced Personal Vaporizer was not designed.
 17. Innokin is not responsible for battery and charger explosions, or malfunctions, due to the use of a low-quality charger. Only use the original CoolFire Pebble Advanced Personal Vaporizer starter kit micro USB cable to charge the device. We recommend that you use a high quality 5V1A USB wall charger (CE/UL Certified).
 18. The CoolFire Pebble Advanced Personal Vaporizer is not designed for use with a car charger, the CoolFire Pebble does not come included with a car charger.
- 

The CoolFire Pebble LED Battery Level Indicator:

The CoolFire Pebble battery capacity is displayed via green, yellow and red LED.

Green = Almost fully Charged.

When the CoolFire Pebble is fully recharged the LED light will power off.

Yellow = Half Power.

Red = Low Power. Charge the CoolFire Pebble.

Ready to Vape?

- Check that the CoolFire Pebble battery is charged and functioning properly.
- Ensure that an atomizer is filled with eliquid and attached correctly. You must have eliquid in the tank before you power on & activate the device. Do not dry burn the coil.
- Check the resistance of the attached coil and set the CoolFire Pebble wattage according to the attached coil's recommended wattage range.
- The ideal wattage may vary according to eliquid and tank airflow.
- Do not set the wattage higher than the recommended level or you may damage the coil. If the coil is damaged, or tastes burnt, replace the coil immediately.
- Begin at the low end of the recommended coil wattage range and steadily increase the set wattage until you find your perfect vape temperature and flavor. Enjoy!

8

OPERATION GUIDE:

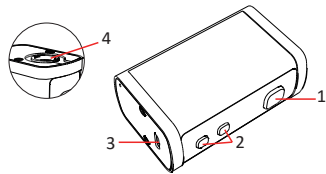
The CoolFire Pebble has three buttons: Power button, "+" button and "-" button.

Power button: On/Off Button

"+" Button: Wattage +

"-" Button: Wattage -

The OLED screen displays all important information.



1. Power Button: On/Off Button

2. "+" Button: Wattage +

"-" Button: Wattage -

3. Micro USB Cable Plug Port

4. CoolFire Pebble Connector

9

To **POWER ON** the CoolFire Pebble:



ON/OFF Power Button:

Press the power button three times in rapid succession to power on the Cool Fire Pebble. The main LED light will blink from red to yellow to green, after which the Cool Fire Pebble will enter standby mode. The final color of the LED will indicate the current power level.

When the CoolFire Pebble has been powered on, hold the button down to activate the unit. The color of the LED when the button is pressed indicates the current power level.

When the power button is pressed (with a suitable clearomizer attached) the OLED screen will display the attached atomizer resistance, voltage and wattage and remaining battery charge.

To **POWER OFF** the CoolFire Pebble:



When the CoolFire Pebble is not in use, press the power button three times in succession to power off the Cool Fire Pebble. Always power off the CoolFire Pebble when it is not being used, or when it is going to be stored in a pocket, bag or purse.

Adjust Variable Wattage:

Hold the "+" or "-" button and the set wattage will flash. Hold the button down to quickly increase or decrease the set wattage.

The CoolFire Pebble wattage can be adjusted from 6.0 to 50 watts in .5 watt increments by pressing the "+" or "-" buttons. If the wattage is decreased below 6 Watts it will cycle up to 50 Watts. If the wattage is increased from 50Watts it will cycle down to 6 watts. Press the Power button to lock the set wattage and activate the CoolFire Pebble.

OLED SCREEN ORIENTATION:

Hold "+" and "-" button for 3 seconds to flip the horizontal orientation of the OLED screen.

SAFETY:

15 second cutoff:

If the Power button is held for 15 seconds or longer the CoolFire Pebble Advanced Personal Vaporizer LED will flash 10 times and then stop firing until the Power button is released and pressed again.



Short Circuit/Atomizer Protection:

Short Circuit/Atomizer Protection protects the CoolFire Pebble Advanced Personal Vaporizer against shorted atomizers and will stop the unit from functioning in unsafe conditions.

The CoolFire Pebble features automatic real-time atomizer Ohms detection. If the resistance of the atomizer is lower than 0.15, the LED will light solidly for 5 seconds, the Ohms bar will blink and the CoolFire Pebble will not power on.



Check Atomizer:

If the atomizer is not connected properly, or resistance is 3.5 Ohm or above, the OLED screen will display "CHECK ATOMIZER".



Over-Discharge Protection:

The CoolFire Pebble Advanced Personal Vaporizer monitors battery voltage and will automatically power off when the battery is over discharged.

'Vape while charging' Technology:

The CoolFire Pebble is recharged with a Micro USB cable. When plugged into a suitable power source the CoolFire Pebble can be vaped and charged at the same time with Innokin Technology's 'Vape while you charge' pass-through technology.

Remember last Wattage setting:

When the CoolFire Pebble is turned off it will remember the current wattage setting and it will retain the setting when the CoolFire Pebble is powered back on.

High compatibility 510 connector:

The CoolFire Pebble threading is compatible with all standard 510 Tank including the iSub and AXIOM series Tank.

Overheat Protection:

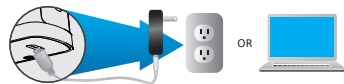
The screen will display "TOO HOT" if the PCB is overheated. The CoolFire Pebble features automatic real-time PCB Chipset temperature detection.



IMPORTANT Charging Information:

Only charge Innokin devices with a high quality CE/UL Certified 5V/1A wall charger.

- Never charge a battery that has been damaged or dropped.
- Never plug a charger into a non-approved mains power transformer.
- Do not overcharge. Remove the battery from the charger when charging is complete.
- Never leave a charging battery unattended.
- Only use the included high quality charging cable.
- Wall Adapters should be CE / UL / FCC certified, high quality and authentic.
- Do not charge your vaporizer with your car.
- If traveling by airplane, do not pack your device into your check in baggage. Speak with your airline about ecigarette/vaporizer transport guidelines.
- If there are any issues with the device please contact your Authorized Innokin vendor immediately.



The main battery level LED will display **green** to indicate a full battery charge, **yellow** indicates power is at half capacity and **red** indicates immediate charging is required.

Red LED light = battery voltage is lower than 3.6V

Yellow LED light = battery voltage is around 3.6V-3.74V

Green LED light = battery voltage is higher than 3.75V

PLEASE NOTE:

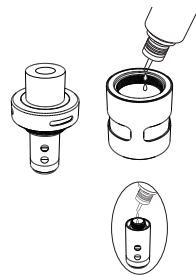
When the battery capacity is lower than 3.3V the Red LED will blink for eight seconds and the CoolFire Pebble will automatically power off.

When the CoolFire Pebble battery is fully charged the LED battery indicator will power off.

How to refill the Slipstream Tank (NOT INCLUDED IN EXPRESS KIT)

Refill with Tank:

- 1) Push the top cap down and turn to open the tank.
- 2) Add eLiquid against the inside wall of the tank.
Do not overfill the Max. indicator line.
- 3) Firmly replace the top cap. Do not over-tighten.



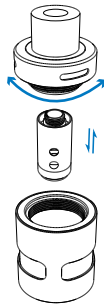
IMPORTANT:

Do not add eLiquid to the center airflow hole.

Please wait 5 minutes before vaping.

Replacing the coil:

- 1) Push the top cap down to activate the Child Proof Cap and turn counter-clockwise to open.
- 2) Carefully unscrew the coil and Safely dispose of used coils away from children & pets.
- 3) Wash hands after any contact with eliquid.
- 4) Attach and tighten a new Silpstream coil.
- 5) Carefully & firmly tighten the top cap.



How to refill the AXIOM M21 Tank (NOT INCLUDED IN EXPRESS KIT)

Refill with Tank:

- 1) Twist the top cap off.
- 2) Carefully add e-liquid by squeezing the liquid slowly into the reservoir.
Do not overfill.
- 3) Twist the top cap on securely.



PRIMING COILS (For new coils)

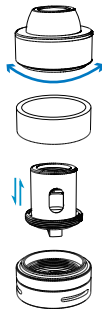
For new coils add approximately 3-5 drops of e-liquid directly onto the cotton.

Wait 1 minutes before vaping.



Replacing the coil:

- 1) Carefully unscrew the tank base from the tank body.
- 2) Hold and unscrew the coil from the tank base.
- 3) Replace with new coil.
- 4) Prime new coil with e-liquid when mounted.
- 5) Carefully screw tank body and base.
- 6) Fill tank with e-liquid (directions above).



WHEN IS IT TIME TO CHANGE THE CLEAROMIZER COIL?

All coils will need to be replaced after a certain amount of use. The time between coil replacements will vary according to the eLiquid used and personal vaping habits. You will know when the atomizer coil should be replaced when you begin experiencing less performance and taste from your clearomizer.

When a new clearomizer coil is used, large vapor clouds and robust flavors will be produced from your e-liquid. The first sign that your coil needs to be replaced is that there will be less vapor production.

The second indication that the atomizer coil needs to be replaced is that flavors will become less tasty, and may begin to have a burnt taste. This burnt taste will become more and more apparent as the coil continues to wear out.

We recommend that you change the coil at the very first sign of burnt taste and decreased clouds.

Technical Specifications:

Operating Wattage: 6.0W-50W

Battery: 1300mAh

Maximum output Wattage: 50W

Maximum output Current: 15A

Maximum output Voltage: 7.5V

Clearomizer Resistance: 0.2-3.5Ohm (Recommended)

Charging: Micro USB DC5V/1A